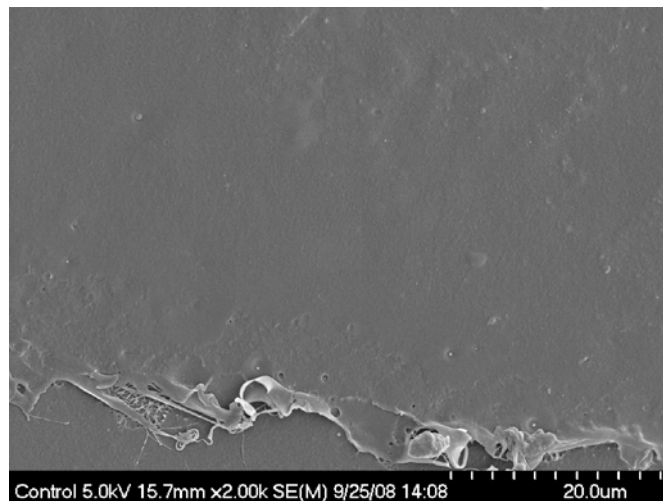
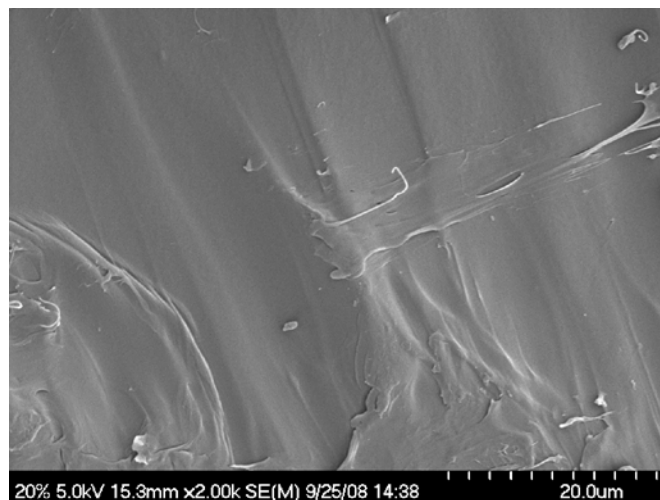


Lapol[®] 108 is a lactic acid based polymer and is, therefore, compatible and fully miscible with poly lactic acid; no compatibilizers are necessary when compounding Lapol[®] 108 and PLA. The scanning electron microscope micrographs below show the complete miscibility of the two resins.

100% PLA Control



20% Lapol[®] 108 80% PLA



Lapol, LLC

3757 State Street Suite 2A | Santa Barbara, CA | 93105
Tel: 805-456-7950 / Fax: 805-563-7594 / www.lapol.net